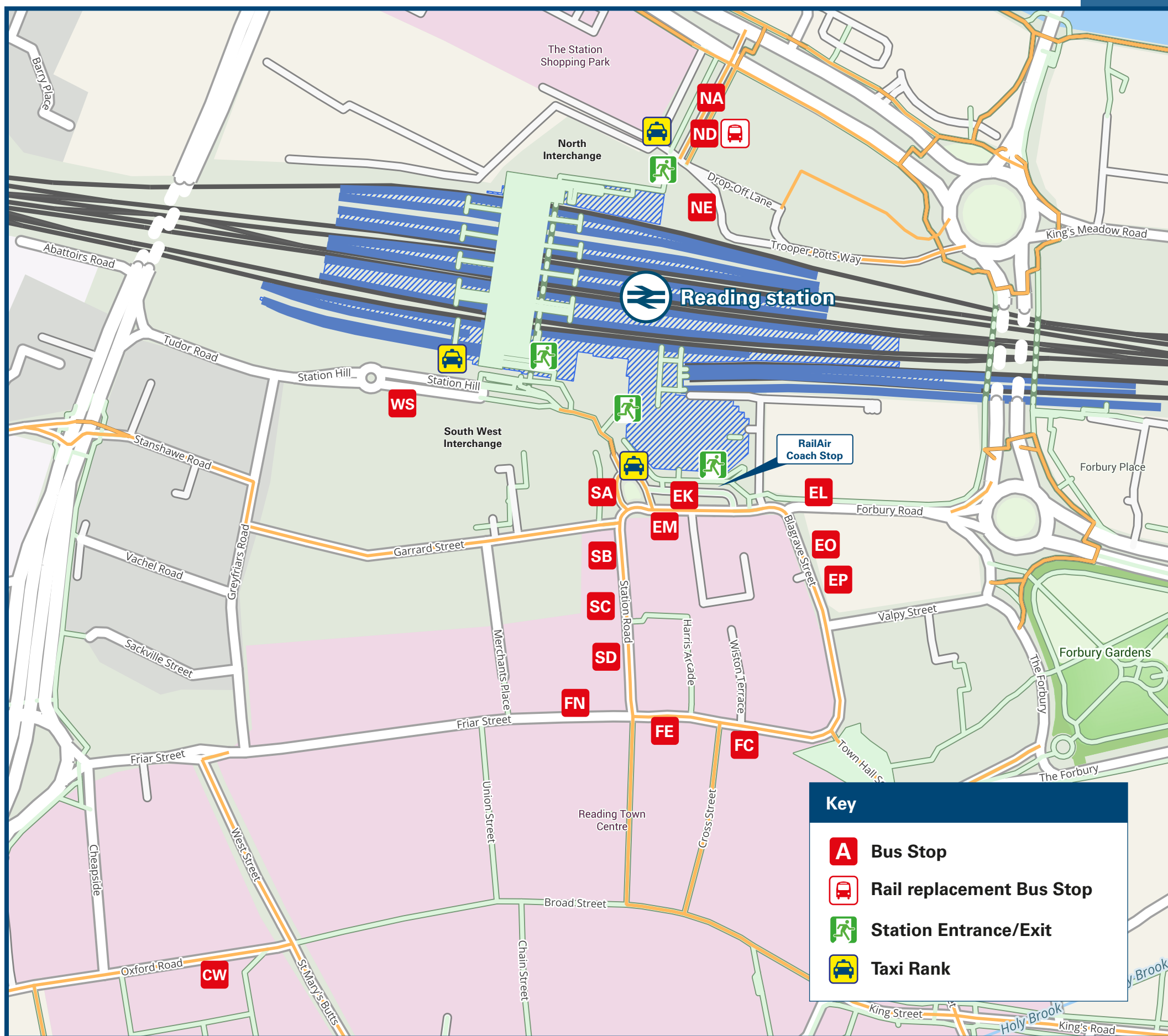




# Reading Station

# Onward Travel Information

## Buses and Taxis



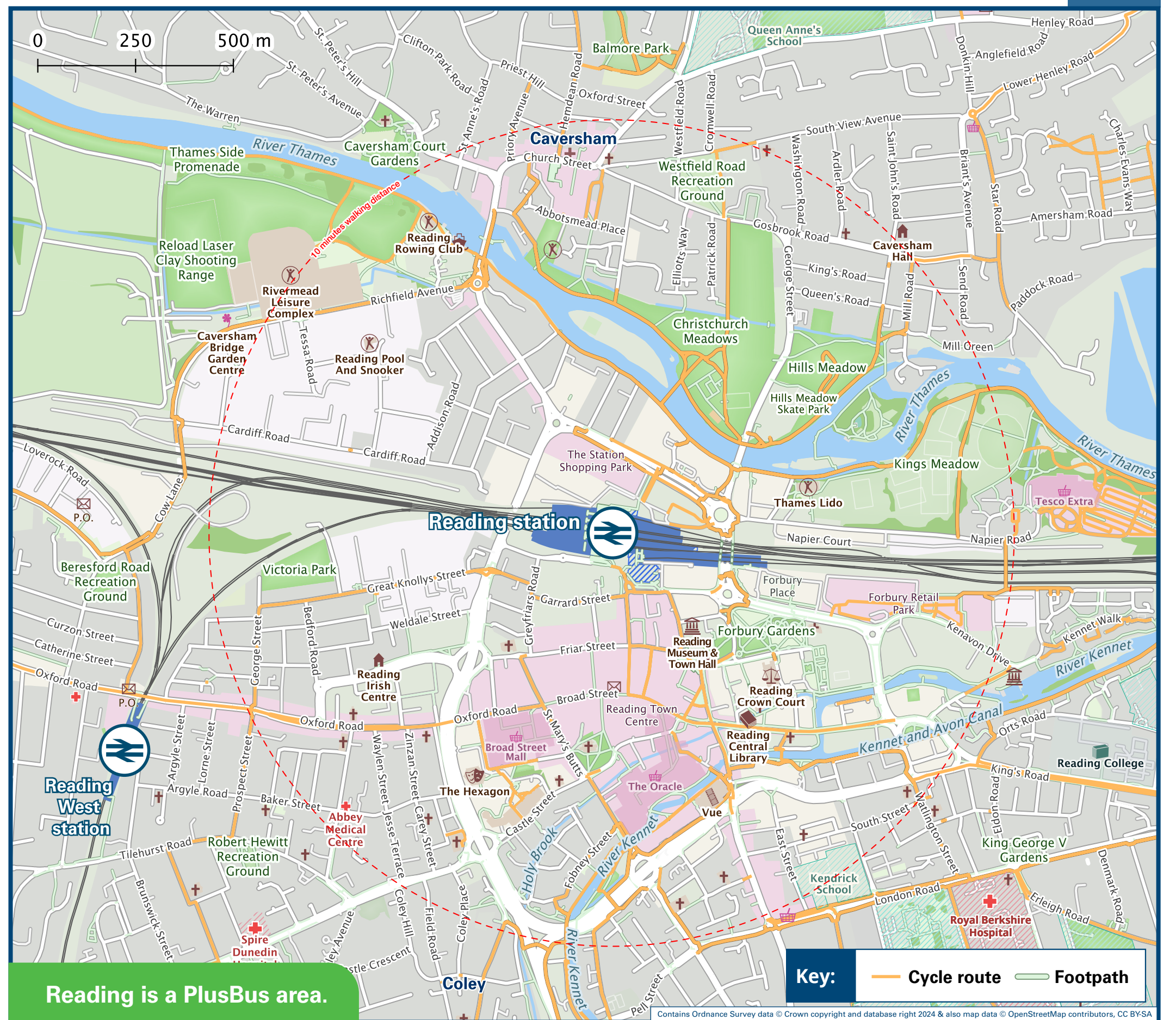
**Key**

- Bus Stop
- Rail replacement Bus Stop
- Station Entrance/Exit
- Taxi Rank



Rail replacement buses/coaches depart from the North side of the station.

## Local area map



PlusBus is a discount price 'bus pass' that you buy with your train ticket. It gives you unlimited bus travel around your chosen town, on participating buses. Visit [www.plusbus.info](http://www.plusbus.info)

## Main destinations by bus

(Data correct at July 2024)



DESTINATION	BUS ROUTES	BUS STOP
Arborfield / Arborfield Green	3	SA
Basingstoke Road	6+, 6a	SC
Bath Road (towards Calcot)	1(jet black)	EP
Beansheaf Estate	26+	EK
Binfield Heath (& Shiplake Row)	800*	EL
Bulmershe	13, 14	EM
Burghfield	2, 2a	EP
Burghfield Common	2, 2a	EP
Calcot	1(jet black)	EP
Campus Reading International	600(Park & Ride)	SD
Caversham Centre	22, X40, 28, 800	EL, NA, EL
Caversham Heights	22, X40	EL, NB, EL, NA
Caversham (Henley Road, County Boundary)	28, 800	EL
Caversham Park	23	EL
Coley Park	11	EO
Dee Park	15, 15a	FE
Dunsden Green	800*	EL
Emmer Green	23, 24, 25	EL
Ford's Farm	26+	EK
Green Park	50(Greenwave)	SD
Heathrow Airport	RA1(RailAir) #	RailAir stop
Henley-on-Thames	28, 800, 850	EL, EO, SD
Kennet Island (Hilton Hotel)	10	SD
Kennet Island Turn	50(Greenwave), 600(Park & Ride)	SD
Kentwood (Overdown Road)	16	FE
Lower Caversham (Amersham Road)	27, 29	EL
Lower Earley	19b, 21+	SA, EK
Marlow	800, 850	EL, EO
Mere oak P&R	600(Park & Ride)	SD
Mortimer Village	2, 2a	EP
Northumberland Avenue	5+	SC
Palmer Park Stadium	4, 17+, X4	EO
Pangbourne	143*	FC
Peppard Common	25	EL
Playhatch (Garden Centre)	28, 800	EL

DESTINATION	BUS ROUTES	BUS STOP
Prospect Park Hospital	33	FE
Purley	16, 143*	FE, FC
Reading College (Kings Road)	13, 14	EM
Reading FC (Select Car Leasing Stadium)	4, 17+, 127, 128, 129, 850, X4	EO
Riseley	F1(Match Days Only)	WS
Royal Berkshire Hospital	600(Park & Ride)	SD
Shinfield Village	3, 9, 19a, 19b, 19c	SA
Shinfield Park (Shinfield Road)	3	SA
Shinfield Park (Foster Wheeler)	603(Mon-Fri AM Peak)	SD
Shiplake	28, 800	EL
Shiplake Row	800*	EL
Sonning	127, 128, 129, 850	EO
Sonning Common	25	EL
Southcote	26+	EK
Spencer's Wood	600(Park & Ride)	SD
Suttons Business Park (London Road)	13, 14	EM
Swallowfield	127, 128, 129, 850, 600(Park & Ride)	EO, SD
Thames Valley Business Park	TVPI(Thames Valley Park Shuttle)	NE
Thames Valley Science Park (TVSP Gateway)	3	SA
Theale	600(Park & Ride), 1(jet black), 15	SD, EP, FE
Tilehurst Village	15, 15a, 33	FE
Tumham's Farm	17+	CW
Twyford	33	FE
University of Reading (Main Campus)	127, 128, 129, 850	EO
Wallingford	3, 9, 19a, 19b, 19c	SA
Wargrave	21+	EK
Westwood Glen	X40	S, B, E, L, N, A
Whitley	850	EO
Whitley Wood	33	FE
Winnersh	5+, 9	SC, SA
	6+, 6a	SC
	9	SA
	4, X4, 500^	EO

DESTINATION	BUS ROUTES	BUS STOP
Wokingham	4, X4	EO
Wokingham Road (Three Tuns)	4, 17+, X4	EO
Woodcote	X40	S, B, E, L, N, A
Woodley	13, 14, 19c	EM, SA
Woodley Green	127, 128, 14	EO, EM

### Notes

- PlusBus destination, please see below for details.
- For bus times and the latest bus service information, please contact Traveline on 0871 200 22 33.
- Plusbus tickets are NOT valid on the Mere oak Park & Ride 600, Thames Valley Park Shuttle and also all Football shuttle bus F1 and special event services.
- Direct trains operate from Reading station to this destination.
- For connecting train services to this destination, please change trains at Twyford.
- For connecting train services to this destination, please change trains at Maidenhead.
- Bus routes 143 and 800 run limited journeys on Mondays to Saturdays only to this destination, please check the timetable for times.
- Bus route 500 runs every 20 minutes daytime and early evenings to Winnersh Park & Ride on Saturdays only.
- This service runs Day and Night services.
- # RA1 (Railair) coach serves Heathrow Airport Terminals 2, 3 and 5.

## Taxis

Reading is a major station where taxis are usually available on a rank. Advance booking is not normally necessary, unless arriving early in the morning or late at night. Operators who may accept bookings include: (Inclusion of this number doesn't represent any endorsement of the taxi firm)

Station Taxis  
0118 986 9090

Capital Cars  
0118 950 9509

1st Royal Taxis  
0118 939 3737

## Further information about all onward travel

<b>Local Cycle Info</b> <a href="http://reading.gov.uk">reading.gov.uk</a> For more information about cycle routes.	<b>National Cycle Info</b> <a href="http://sustrans.org.uk">sustrans.org.uk</a> Sustrans is the UK's leading sustainable transport charity.	<b>Bus Times</b> See timetable displays at bus stops.  <a href="http://www.traveline.info">www.traveline.info</a> 0871 200 22 33 calls cost 10p per minute plus your phone company's access charge	<b>NextBuses.mobi</b>  <b>Find the bus times for your stop.</b> Search for a bus stop by entering a postcode, street & town or a stop name & town.	<b>PlusBus</b>  <a href="http://plusbus.info">plusbus.info</a> A discount price 'bus pass' that you buy with your train ticket. It gives you unlimited bus travel around your chosen town, on participating buses.
---	---	---	---	---

## National Rail Enquiries

<b>Online</b> <a href="http://nationalrail.co.uk">nationalrail.co.uk</a>	<b>NRE App</b> Free National Rail Enquiries app for iOS and Android	<b>Social Media</b> <a href="https://facebook.com/nationalrailenq">facebook.com/nationalrailenq</a> @nationalrailenq	<b>Alert Me</b> You can sign up to Alert Me messages on the National Rail Enquiries website where you can receive train and platform notifications directly to your smart phone. <a href="http://nationalrail.co.uk/alertme">nationalrail.co.uk/alertme</a>	<b>Contact Centre</b> 03457 48 49 50 Calls cost no more than calls to geographic numbers (01 or 02) and may be recorded.	<b>PlusBike</b>  <a href="http://nationalrail.co.uk/plusbike">nationalrail.co.uk/plusbike</a> For more information.
---	--	--	---	--	--



**National Rail**  
Britain's train companies working together



This poster shows details of popular destinations and main, frequent bus routes. Additional services may run, so please check with Traveline or see posters at local bus stops. Whilst considerable care has been taken to ensure the information contained on this poster is correct and accurate, National Rail cannot accept responsibility for any loss or inconvenience caused by any errors or omissions, or for loss, damage, injury or inconvenience relating to the cancellation, alteration, delay or diversion of a service. For any feedback, please e-mail [comments@onwardtravelposters.com](mailto:comments@onwardtravelposters.com)

Scan this code with your mobile for full station information.