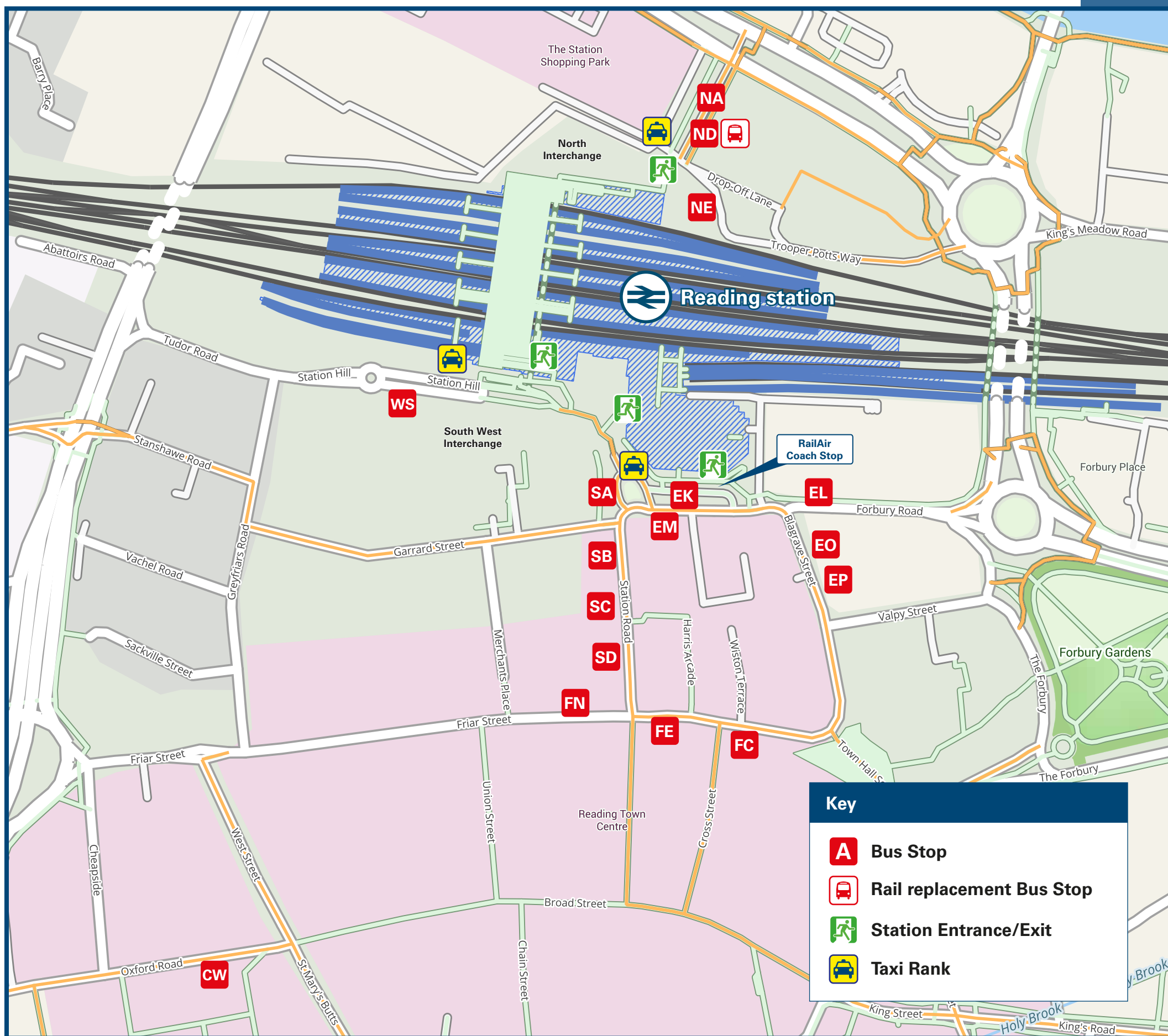




# Reading Station

# Onward Travel Information

## Buses and Taxis

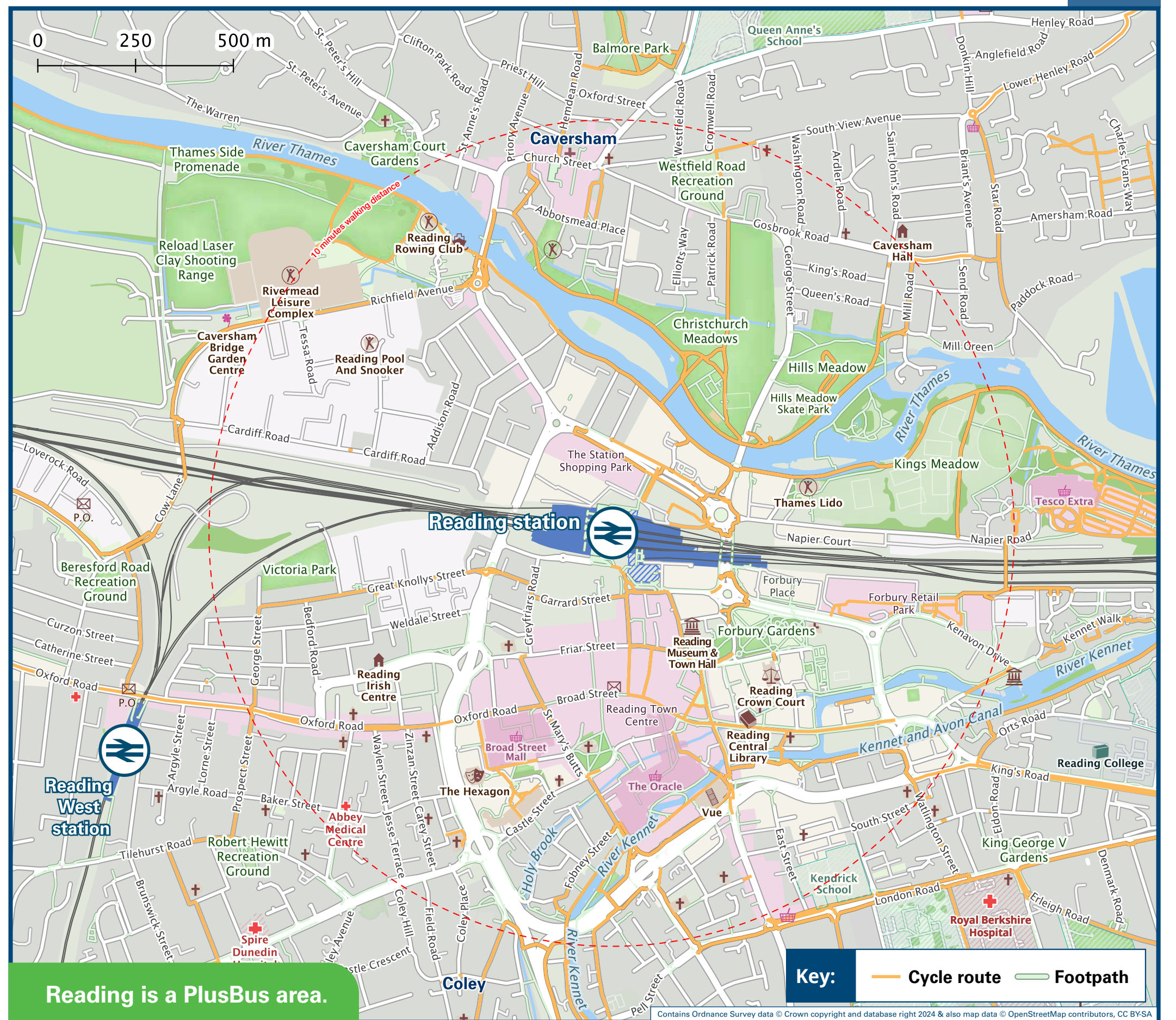


**Key**

- Bus Stop
- Rail replacement Bus Stop
- Station Entrance/Exit
- Taxi Rank

Rail replacement services depart from the north side of the station.

## Local area map



Reading is a PlusBus area.



PlusBus is a discount price 'bus pass' that you buy with your train ticket. It gives you unlimited bus travel around your chosen town, on participating buses. Visit [www.plusbus.info](http://www.plusbus.info)

## Main destinations by bus

(Data correct at September 2024)



DESTINATION	BUS ROUTES	BUS STOP
Arboretum / Arborfield Green	3	SA
Basingstoke Road	6+, 6a	SC
Bath Road (towards Calcot)	1(jet black)	EP
Beansheaf Estate	26+	EK
Bulmershe	13, 14	EM
Burghfield	2, 2a	EP
Burghfield Common	2, 2a	EP
Calcot	1(jet black)	EP
26+		EK
Campus Reading International	600(Park & Ride)	SD
Caversham Centre	24, X40	EL, NA
28		EL
Caversham Heights	22	EL, NB
X40		EL, NA
Caversham (Henley Road, County Boundary)	28	EL
Caversham Park	23	EL
Coley Park	11	EO
Dee Park	15, 15a	FE
Emmer Green	23, 24, 25	EL
Ford's Farm	26+	EK
Green Park	50(Greenwave)	SD
Heathrow Airport (Terminals 2, 3 & 5)	RA1(RailAir)	R, A
Henley-on-Thames	28	EL
850		EO
Kennet Island (Hilton Hotel)	10	SD
Kennet Island Turn	50(Greenwave), 600(Park & Ride)	SD
Kentwood (Overdown Road)	16	FE
Lower Caversham (Amersham Road)	27, 29	EL
Lower Earley	19b	SA
21+		EK
850		EO
Mereok P&R	600(Park & Ride)	SD
Mortimer Village	2, 2a	EP
Northumberland Avenue	5+	SC

DESTINATION	BUS ROUTES	BUS STOP
Palmer Park Stadium	4, 17+, X4	EO
Pangbourne	143*	FC
Peppard Common	25	EL
Playhatch (Garden Centre)	28	EL
Prospect Park Hospital	33	FE
Purley	16	FE
143*		FC
13, 14		EM
Reading College (Kings Road)	4, 17+, 127, 128, 129, 850, X4	EO
Reading FC (Select Car Leasing Stadium)	F1(Match Days Only)	WS
Riseley	600(Park & Ride)	SD
Royal Berkshire Hospital	3, 9, 19a, 19b, 19c	SA
Shinfield Village	3	SA
Shinfield Park (Shinfield Road)	3	SA
Shinfield Park (Foster Wheeler)	603(Mon-Fri AM Peak)	SD
Shiplake	28	EL
Sonning	127, 128, 129, 850	EO
Sonning Common	25	EL
Southcote	26+	EK
Spencer's Wood	600(Park & Ride)	SD
Suttons Business Park (London Road)	13, 14	EM
127, 128, 129, 850		EO
Swallowfield	600(Park & Ride)	SD
Thames Valley Business Park	TVP(Thames Valley Park Shuttle)	NE
Thames Valley Science Park (TVSP Gateway)	3	SA
600(Park & Ride)		SD
Theale	1(jet black)	EP
15		FE
15, 15a, 33		FE
17+		CW
33		FE
127, 128, 129, 850		EO
3, 9, 19a, 19b, 19c		SA
21+		EK
University of Reading (Main Campus)		EK

DESTINATION	BUS ROUTES	BUS STOP
Wallingford	X40	SB, EL, NA
Wargrave	850	EO
Westwood Glen	33	FE
Whitley	5+	SC
9		SA
Whitley Wood	6+, 6a	SC
9		SA
Winners	4, X4, 500^	EO
Wokingham	4, X4	EO
Wokingham Road (Three Tuns)	4, 17+, X4	EO
Woodcote	X40	SB, EL, NA
13, 14		EM
Woodley	19c	SA
127, 128		EO
Woodley Green	14	EM

### Notes

- PlusBus destination, please see below for details.
- For bus times and the latest bus service information, please contact Traveline on 0871 200 22 33.
- Plusbus tickets are NOT valid on the Mereok Park & Ride 600, Thames Valley Park Shuttle and also all Football shuttle bus F1 and special event services.
- Direct trains operate from Reading station to this destination.
- For connecting train services to this destination, please change trains at Twyford.
- For connecting train services to this destination, please change trains at Maidenhead.
- Bus route 143 runs limited journeys on Mondays to Saturdays only, please check the timetable for times.
- Bus route 500 runs every 15 minutes daytime and early evenings to Winners Park & Ride.
- + This service runs Day and Night services.

## Taxis

Reading is a major station where taxis are usually available on a rank. Advance booking is not normally necessary, unless arriving early in the morning or late at night. Operators who may accept bookings include: (Inclusion of this number doesn't represent any endorsement of the taxi firm)

Station Taxis  
0118 986 9090

Capital Cars  
0118 950 9509

1st Royal Taxis  
0118 939 3737

## Further information about all onward travel

<b>Local Cycle Info</b> <a href="http://reading.gov.uk">reading.gov.uk</a> For more information about cycle routes.	<b>National Cycle Info</b> <a href="http://sustrans.org.uk">sustrans.org.uk</a> Sustrans is the UK's leading sustainable transport charity.	<b>Bus Times</b> See timetable displays at bus stops.  <a href="http://www.traveline.info">www.traveline.info</a> 0871 200 22 33 calls cost 10p per minute plus your phone company's access charge	<b>NextBuses</b> <b>Find the bus times for your stop.</b> Search for a bus stop by entering a postcode, street & town or a stop name & town.	<b>PlusBus</b> <b>plusbus.info</b> A discount price 'bus pass' that you buy with your train ticket. It gives you unlimited bus travel around your chosen town, on participating buses.
---------------------------------------------------------------------------------------------------------------------------	---------------------------------------------------------------------------------------------------------------------------------------------------	-------------------------------------------------------------------------------------------------------------------------------------------------------------------------------------------------------------------	----------------------------------------------------------------------------------------------------------------------------------------------------	----------------------------------------------------------------------------------------------------------------------------------------------------------------------------------------------

## National Rail Enquiries

<b>Online</b> <a href="http://nationalrail.co.uk">nationalrail.co.uk</a>	<b>NRE App</b> Free National Rail Enquiries app for iOS and Android	<b>Social Media</b> <a href="https://facebook.com/nationalrailenq">facebook.com/nationalrailenq</a> @nationalrailenq	<b>Alert Me</b> You can sign up to Alert Me messages on the National Rail Enquiries website where you can receive train and platform notifications directly to your smart phone. <a href="http://nationalrail.co.uk/alertme">nationalrail.co.uk/alertme</a>	<b>Contact Centre</b> 03457 48 49 50 Calls cost no more than calls to geographic numbers (01 or 02) and may be recorded.	<b>PlusBike</b> <a href="http://nationalrail.co.uk/plusbike">nationalrail.co.uk/plusbike</a> For more information.
-----------------------------------------------------------------------------	------------------------------------------------------------------------	----------------------------------------------------------------------------------------------------------------------------	-------------------------------------------------------------------------------------------------------------------------------------------------------------------------------------------------------------------------------------------------------------------	--------------------------------------------------------------------------------------------------------------------------------	--------------------------------------------------------------------------------------------------------------------------



**National Rail**  
Britain's train companies working together



This poster shows details of popular destinations and main, frequent bus routes. Additional services may run, so please check with Traveline or see posters at local bus stops. Whilst considerable care has been taken to ensure the information contained on this poster is correct and accurate, National Rail cannot accept responsibility for any loss or inconvenience caused by any errors or omissions, or for loss, damage, injury or inconvenience relating to the cancellation, alteration, delay or diversion of a service. For any feedback, please e-mail [comments@onwardtravelposters.com](mailto:comments@onwardtravelposters.com)

Scan this code with your mobile for full station information.