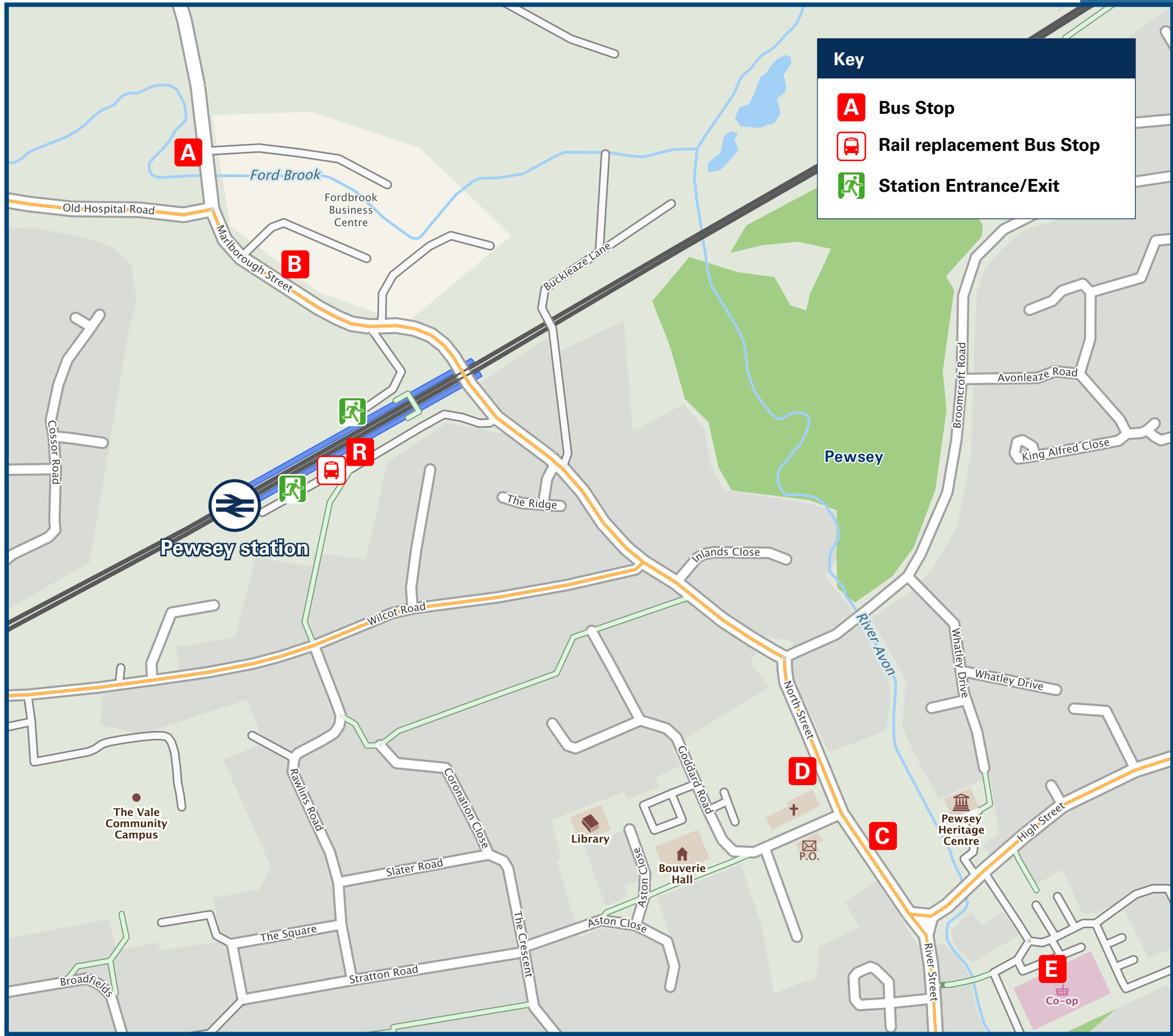




Pewsey Station

Onward Travel Information

Buses



Rail replacement services from the station forecourt.

Local area map



Main destinations by bus

(Data correct at January 2025)



DESTINATION	BUS ROUTES	BUS STOP
All Cannings (Village Hall)	101#	D
Allington & Horton	101#	D
Alton Barnes	101#	D
Alton Priors	101#	D
Amesbury (for Stonehenge)	X4*, X5	B, C
Bulford	X4*	C
Chiseldon	X5	A, D
Devizes (Market Place)	101#	D
Durrington	X4*, X5	B, C
Enford	X4*, X5	B, C

DESTINATION	BUS ROUTES	BUS STOP
Figheledean	X4*, X5	B, C
Little Horton & Coate	101#	D
Manningfords	X4*, X5	B, C
Marlborough	X5	A, D
Netheravon	X4*, X5	B, C
Oare	X5	A, D
Ogbourne St George	X5	A, D
Old Sarum	X4*, X5	B, C
Pewsey Wharf	X5	A, D
Salisbury	X5	A, D

DESTINATION	BUS ROUTES	BUS STOP
Stanton St Bernard	101#	D
Swindon	X5	A, D
Upavon	X4*, X5	B, C
West Chisenbury	X4*, X5	B, C
Wilcot	101#	D

Notes

Bus route X5 operates Mondays to Saturdays only. No service on Sundays or Public Holidays.

Also available from Pewsey Railway station is Wiltshire Connect, an on-demand bus service which operates between 6am-6pm Monday to Friday and 7am-7pm on Saturdays. Journeys can be booked up to a week ahead and on the day with 30 minutes notice, subject to vehicle availability. Please see www.connectingwiltshire.co.uk/getting-around/bus/wiltshire-connect for more information, or call 01225 712 900 between 9am-5pm Monday to Friday.

For bus times and other bus service enquiries, please contact Traveline www.traveline.info (or call: 0871 200 22 33).

Bus route 101 operates a very limited Mondays to Fridays service, only.

* Bus route X4 operates very limited (4 journeys, only, Mondays to Saturdays; and 2 journeys, only, on Sundays and Public Holidays) from bus stop {C} in Pewsey Village Centre only.

AONB North Wessex Downs (AONB) www.northwessexdowns.org.uk

Taxis

Pewsey Station has no taxi rank or cab office. Advance booking is essential, please consider using the following local operators: (Inclusion of this number doesn't represent any endorsement of the taxi firm)

Valleywide Taxi
0800 170 7575

Pewsey Station Taxis
01672 642 122

AVID Taxis
07738 439 728

Further information about all onward travel

Local Cycle Info	National Cycle Info	Bus Times	NextBuses	PlusBus
wiltshire.gov.uk For more information about cycle routes.	sustrans.org.uk Sustrans is the UK's leading sustainable transport charity.	See timetable displays at bus stops. www.traveline.info 0871 200 22 33 calls cost 10p per minute plus your phone company's access charge	 Find the bus times for your stop. Search for a bus stop by entering a postcode, street & town or a stop name & town.	 plusbus.info A discount price 'bus pass' that you buy with your train ticket. It gives you unlimited bus travel around your chosen town, on participating buses.

National Rail Enquiries

Online	NRE App	Social Media	Alert Me	Contact Centre	PlusBike
nationalrail.co.uk	Free National Rail Enquiries app for iOS and Android	facebook.com/nationalrailenq @nationalrailenq	You can sign up to Alert Me messages on the National Rail Enquiries website where you can receive train and platform notifications directly to your smart phone. nationalrail.co.uk/alertme	03457 48 49 50 Calls cost no more than calls to geographic numbers (01 or 02) and may be recorded.	nationalrail.co.uk/plusbike For more information.



National Rail
Britain's train companies working together



This poster shows details of popular destinations and main, frequent bus routes. Additional services may run, so please check with Traveline or see posters at local bus stops. Whilst considerable care has been taken to ensure the information contained on this poster is correct and accurate, National Rail cannot accept responsibility for any loss or inconvenience caused by any errors or omissions, or for loss, damage, injury or inconvenience relating to the cancellation, alteration, delay or diversion of a service. For any feedback, please e-mail comments@onwardtravelposters.com

Scan this code with your mobile for full station information.