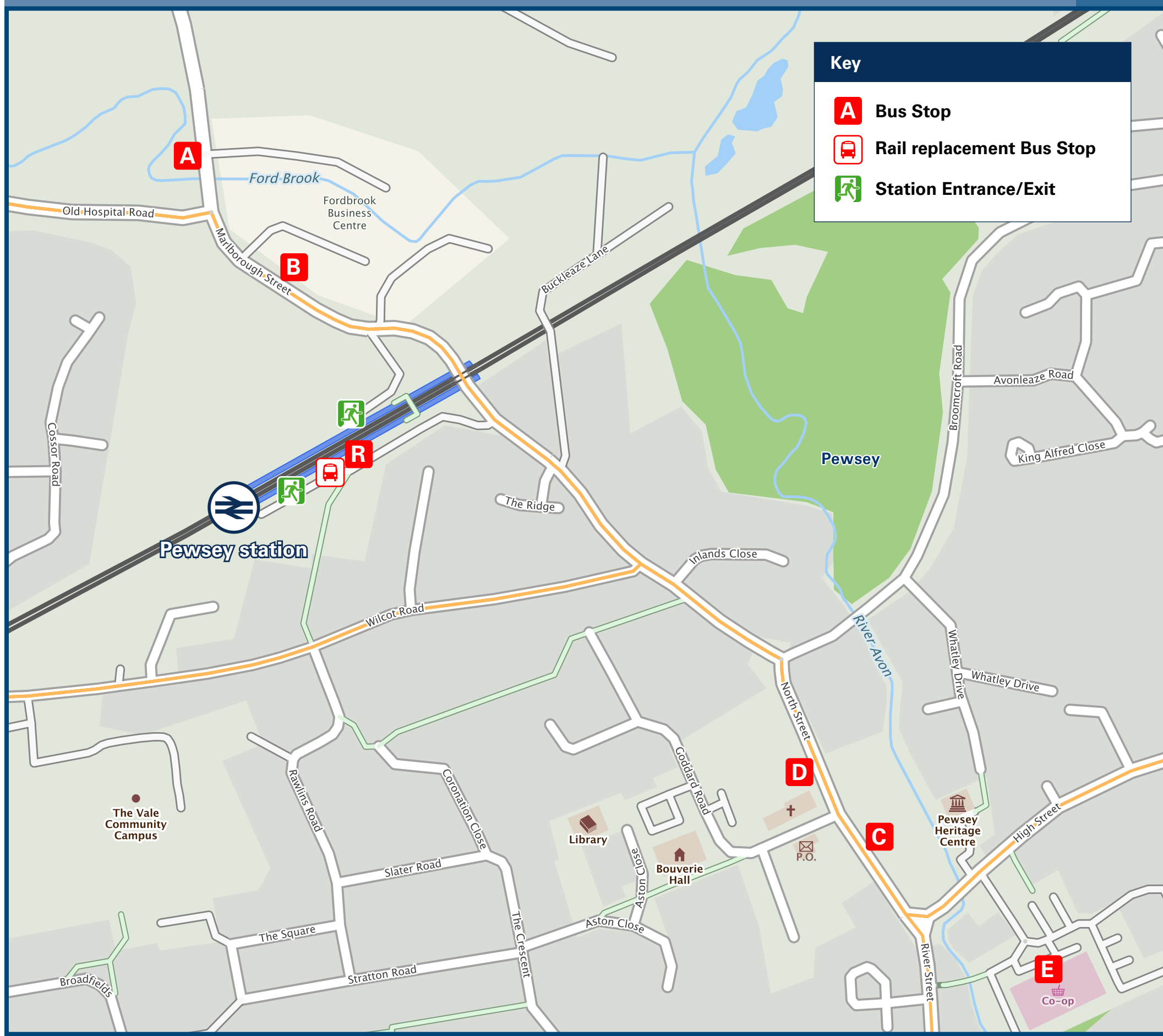




Pewsey Station

Onward Travel Information

Buses



Rail replacement services from the station forecourt.

Local area map



Main destinations by bus

(Data correct at November 2023)

DESTINATION	BUS ROUTES	BUS STOP
All Cannings (Village Hall)	101+, Wiltshire Connect#	D, E, R^
Allington & Horton	101++, Wiltshire Connect#	D, E, R^
Alton Barnes	101++, Wiltshire Connect#	D, E, R^
Alton Priors	101+, Wiltshire Connect#	D, E, R^
Amesbury (for Stonehenge)	X4*, X5	B, C
Beechingstoke	Wiltshire Connect#	D, E, R^
Bulford	X4*	C
Burbage & Stibb Green	Wiltshire Connect#	E, R^
Chirton	101(Schooldays only)+, Wiltshire Connect#	D, E, R^
Chiseldon	X5	A, D
Devizes (Market Place)	101+, Wiltshire Connect#	D, E, R^
Durrington	X4*, X5	B, C
East & West Grafton	Wiltshire Connect#	E, R^
Easton Royal	Wiltshire Connect#	E, R^
Enford	X4*, X5	B, C
Etchilhampton	101++, Wiltshire Connect#	D, E, R^
Figheledean	X4*, X5	B, C

DESTINATION	BUS ROUTES	BUS STOP
Hilcot	101+, Wiltshire Connect#	D, E, R^
Little Horton & Coate	101++, Wiltshire Connect#	D, E, R^
Manningfords	X4*, X5	B, C
Marden	101(Schooldays only)+, Wiltshire Connect#	D, E, R^
Marlborough	X5	A, D
Milton Lilbourne	Wiltshire Connect#	D, E, R^
Netheravon	X4*, X5	B, C
Oare	X5	A, D
Ogbourne St George	X5	A, D
Old Sarum	X4*, X5	B, C
Patney	Wiltshire Connect#	D, E, R^
Pewsey Wharf	X5	A, D
Rushall	Wiltshire Connect#	D, E, R^
Salisbury	X5	A, D
Stanton St Bernard	101++, Wiltshire Connect#	D, E
Swindon	X5	A, D
Upavon	X4*, X5	B, C

DESTINATION	BUS ROUTES	BUS STOP
West Chisenbury	X4*, X5	B, C
Wilcot	Wiltshire Connect#	E, R^
Woodborough	101(Schooldays only)+, Wiltshire Connect#	D, E, R^
Wootton Rivers	Wiltshire Connect#	E, R^

Notes

Bus route X5 operates Mondays to Saturdays only. No service on Sundays or Public Holidays.

For bus times and other bus service enquiries, please contact Traveline on 0871 200 22 33.

+ Bus route 101 operates Mondays to Fridays to this destination, pre-booking is not required from stops **D** or **E**. Wiltshire Connect Saturday journeys must be pre-booked.

++ Bus route 101 operates Mondays to Fridays to this destination, pre-booking is required. This can be done in the Wiltshire Connect app or by calling 01225 712 900.

Wiltshire Connect is an on-demand bus service which operates between 6am-8pm Monday to Friday and 7am-7pm on Saturdays. Journeys can be booked up to a week ahead and on the day with 30 minutes notice, subject to vehicle availability. Download the app or call 01225 712 900 between 9am-5pm Monday to Friday.

^ Wiltshire Connect journeys must be pre-booked at least 30 minutes earlier from Pewsey railway station stop **R**.

* Bus route X4 operates 4 journeys Mondays to Saturdays and 2 journeys on Sundays and Public Holidays from bus stop **D** in Pewsey Village Centre only.

Taxis

Pewsey Station has no taxi rank or cab office. Advance booking is essential, please consider using the following local operators: (Inclusion of this number doesn't represent any endorsement of the taxi firm)

Valleywide Taxi
0800 170 7575

Amber Cars
07507 087 217

Browns Taxis (Marlborough)
07847 097 189

Further information about all onward travel

Local Cycle Info wiltshire.gov.uk For more information about cycle routes.	National Cycle Info sustrans.org.uk Sustrans is the UK's leading sustainable transport charity.	Bus Times See timetable displays at bus stops. www.traveline.info 0871 200 22 33 calls cost 12p per minute plus your phone company's access charge	NextBuses.mobi Find the bus times for your stop. Search for a bus stop by entering a postcode, street & town or a stop name & town.	PlusBus plusbus.info A discount price "bus pass" that you buy with your train ticket. It gives you unlimited bus travel around your chosen town, on participating buses.
---	--	---	--	---

National Rail Enquiries

Online nationalrail.co.uk	NRE App Free National Rail Enquiries app for iOS and Android	Social Media facebook.com/nationalrailenq @nationalrailenq	Alert Me You can sign up to Alert Me messages on the National Rail Enquiries website where you can receive train and platform notifications directly to your smart phone. nationalrail.co.uk/alertme	Contact Centre 03457 48 49 50 Calls cost no more than calls to geographic numbers (01 or 02) and may be recorded.	PlusBike nationalrail.co.uk/plusbike For more information.
-------------------------------------	--	---	---	--	---



This poster shows details of popular destinations and main, frequent bus routes. Additional services may run, so please check with Traveline or see posters at local bus stops. Whilst considerable care has been taken to ensure the information contained on this poster is correct and accurate, National Rail cannot accept responsibility for any loss or inconvenience caused by any errors or omissions, or for loss, damage, injury or inconvenience relating to the cancellation, alteration, delay or diversion of a service. For any feedback, please e-mail comments@onwardtravelposters.com

Scan this code with your mobile for full station information.