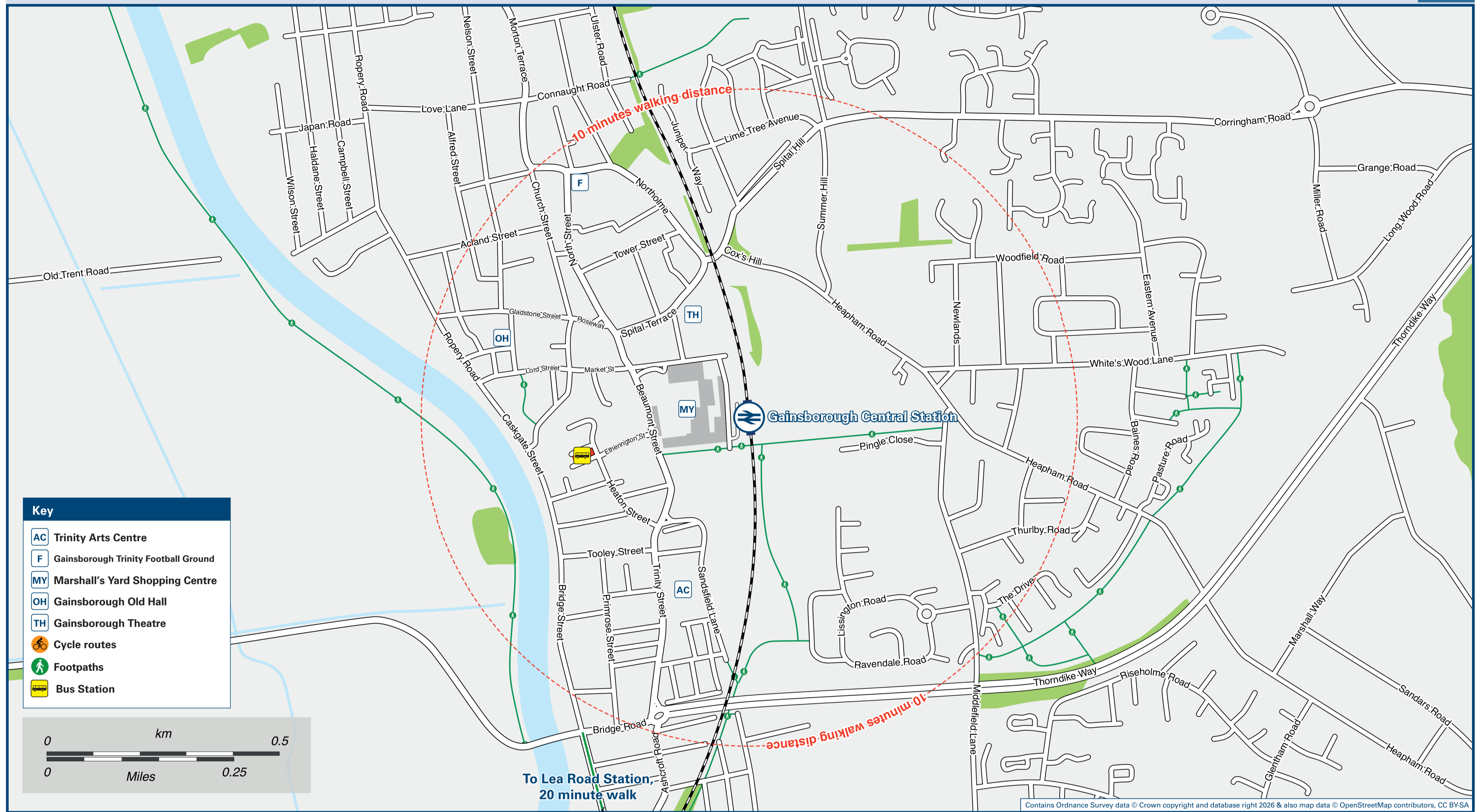




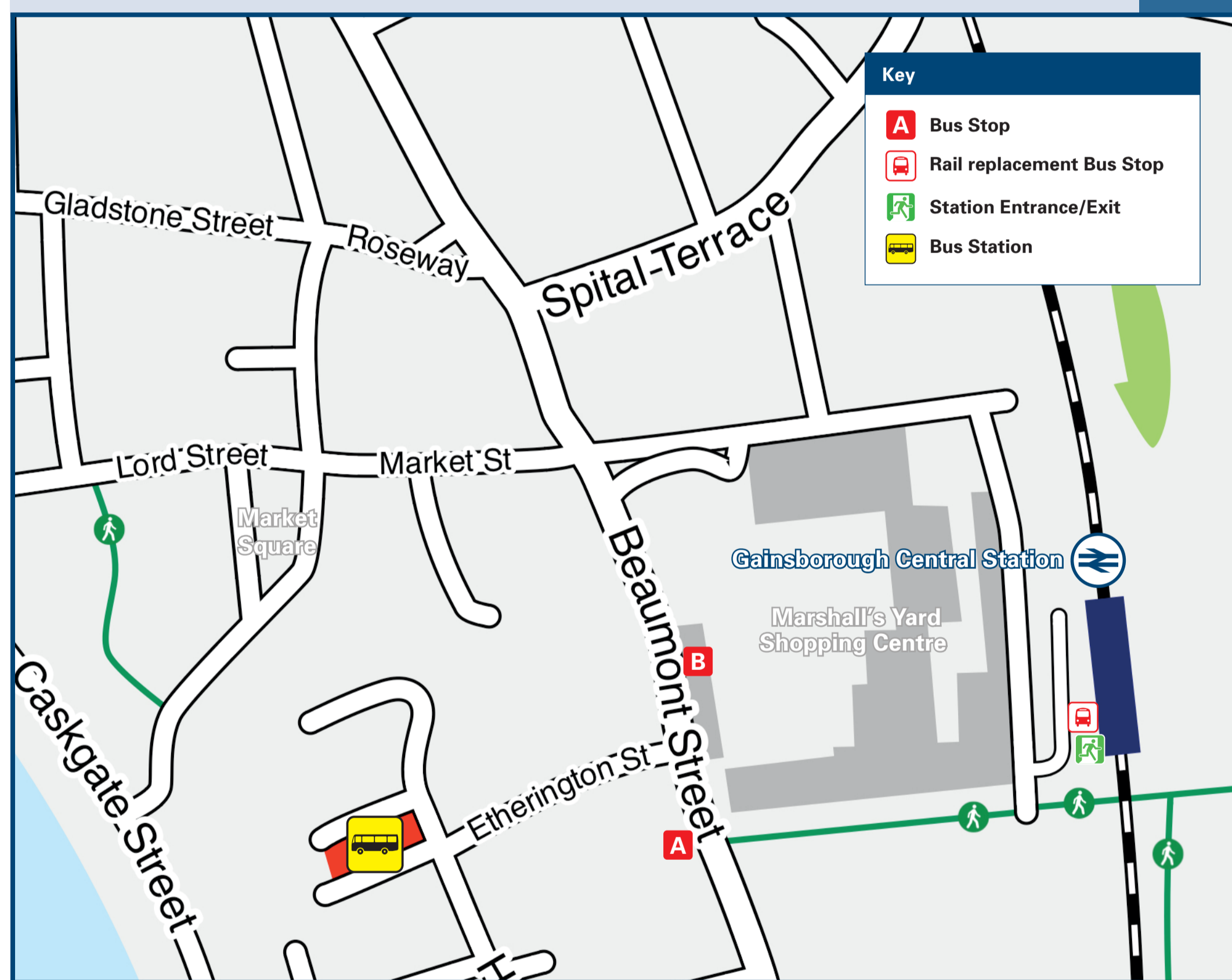
Gainsborough Central Station

Onward Travel Information

Local area map



Buses



Rail replacement buses will Pick Up / Drop Off at the entrance to the station car park.

Main destinations by bus

(Data correct at February 2026)

DESTINATION	BUS ROUTES	BUS STOP
Beckingham	95, 97, 98	Bus Station
Blyton	100	A, Bus Station
Corringham	106#	Bus Station
Fenton	106#, 107#	Bus Station
Gainsborough (Bus Station)	5 minutes walk from this Station (please see maps)	Bus Station
Gainsborough (John Coupland Hospital)	1, 2	A, Bus Station
Gainsborough (Newlands)	1, 2	A, Bus Station
Gainsborough (Park Springs)	1, 2	A, Bus Station
Gainsborough Lea Road Station	100	B, Bus Station
Gringley	97, 98	Bus Station
Heapham	106#	Bus Station
Kexby	100	B, Bus Station
	106#	Bus Station
Knaith Park	100	B, Bus Station
Laughterton	106#	Bus Station
	106#	Bus Station
Lea	100	B, Bus Station
	106#, 107#	Bus Station
Lincoln (Central Bus Station)	100	B, Bus Station
	106#, 107#	Bus Station
Marton	106#, 107#	Bus Station
Messingham	100	A, Bus Station
Misterton	97, 98	Bus Station
Morton	1, 2, 100	A, Bus Station
Newton on Trent	106#	Bus Station
Retford	95, 97	Bus Station
Saxilby	100	B, Bus Station
	106#, 107#	Bus Station
Scotton	100	A, Bus Station
Scunthorpe	100	A, Bus Station
Springthorpe	106#	Bus Station
Stow	100	B, Bus Station
	106#	Bus Station
Sturton by Stow	100	B, Bus Station
	106#	Bus Station
Torksey	106#, 107#	Bus Station
Upton	106#	Bus Station
Walkeringham	97, 98	Bus Station
West Stockwith	97, 98	Bus Station
Willingham by Stow	100	B, Bus Station
	106#	Bus Station

Notes

A more frequent rail service operates from Gainsborough Lea Road Station. Bus routes 1, 2, 95, 97, 98 and 100 run daytime Mondays to Saturdays services, only. No evenings or Sunday services.
 CallConnect is a demand responsive bus service which operates in this area Monday to Saturday. For more details please call 0345 234 3344 or visit the website www.lincsbus.com
 For bus times and days of operation please contact Traveline on www.traveline.info or call: 0871 200 22 33
 Direct rail services operate to this destination from Gainsborough Lea Road Railway Station.
 Change here for connecting National Rail services.
 Bus routes 106 & 107 operate limited daytime Mondays to Saturdays services (1 or 2 buses, only) No evening or Sunday services.

Taxis

Gainsborough Central station has no taxi rank or cab office. Advance booking is essential, please consider using the following local operators: (Inclusion of this number doesn't represent any endorsement of the taxi firm)

Robs Taxis
01427 810 999

D & T Taxis
01427 617 834

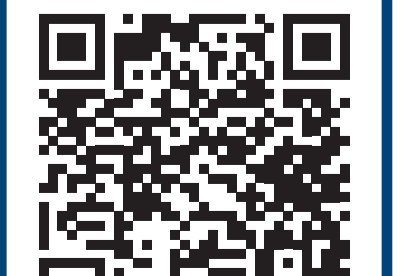
1st Choice Taxis
01427 811 005

Further information about all onward travel

Local Cycle Info lincolnshire.gov.uk <small>For more information about cycle routes.</small>	National Cycle Info walkwheelcycletrust.org.uk	Bus Times <small>See timetable displays at bus stops.</small> www.traveline.info 0871 200 22 33 <small>calls cost 13p per minute plus your phone company's access charge</small>	PlusBus plusbus.info <small>PlusBus is a discount price 'bus pass' that you buy with your train ticket. It gives you unlimited bus travel around your chosen town, on participating buses. Visit www.plusbus.info</small>
--	--	--	--

National Rail Enquiries

Online nationalrail.co.uk	NRE App Free National Rail Enquiries app for iOS and Android	Social Media facebook.com/nationalrailenq @nationalrailenq	Alert Me <small>You can sign up to Alert Me messages on the National Rail Enquiries website where you can receive train and platform notifications directly to your smart phone.</small> nationalrail.co.uk/alertme	Contact Centre 03457 48 49 50 <small>Calls cost no more than calls to geographic numbers (01 or 02) and may be recorded.</small>	PlusBike nationalrail.co.uk/plusbike <small>For more information.</small>
---	---	--	--	--	---



This poster shows details of popular destinations and main, frequent bus routes. Additional services may run, so please check with Traveline or see posters at local bus stops. Whilst considerable care has been taken to ensure the information contained on this poster is correct and accurate, National Rail cannot accept responsibility for any loss or inconvenience caused by any errors or omissions, or for loss, damage, injury or inconvenience relating to the cancellation, alteration, delay or diversion of a service. For any feedback, please e-mail comments@onwardtravelposters.com

Scan this code with your mobile for full station information.