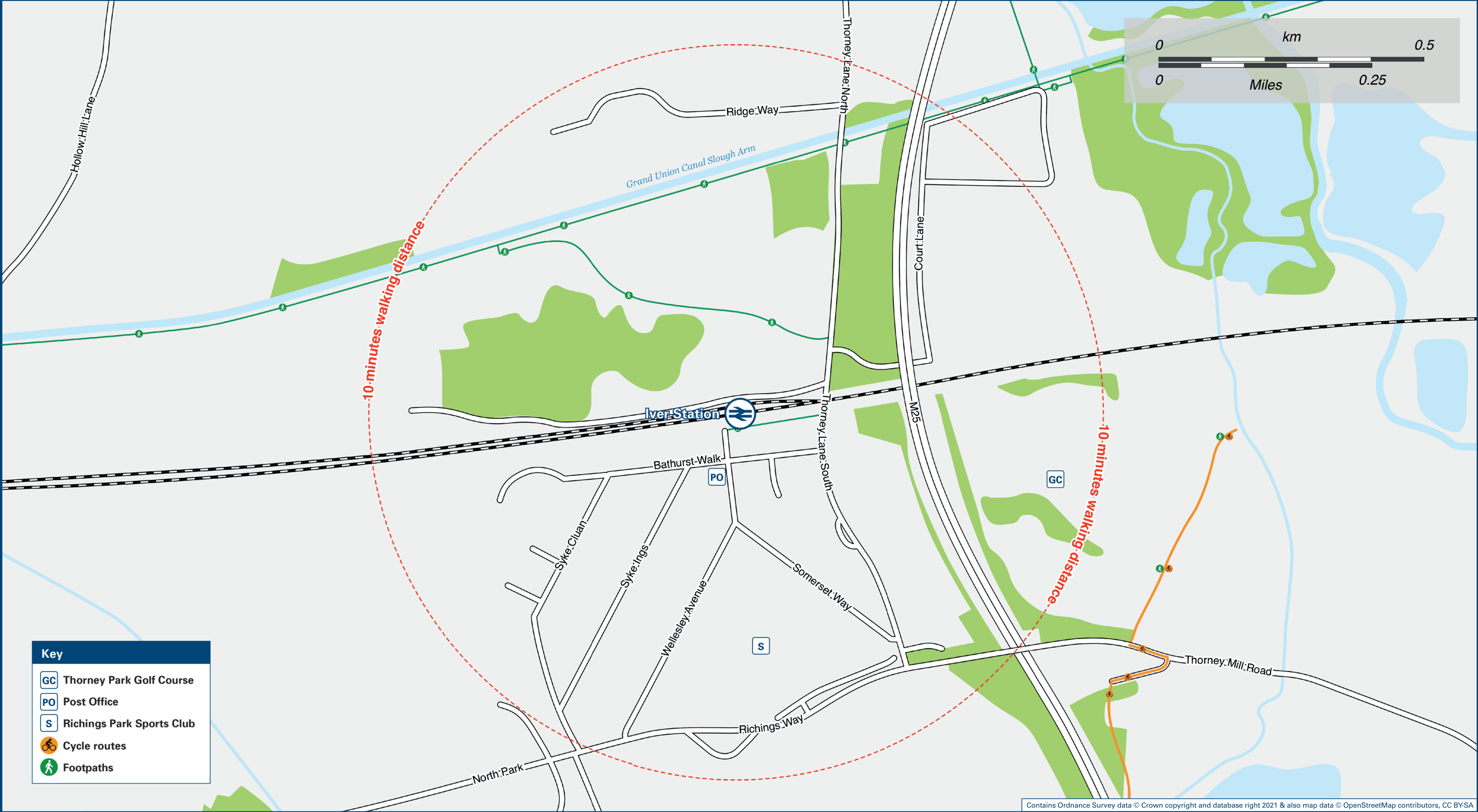




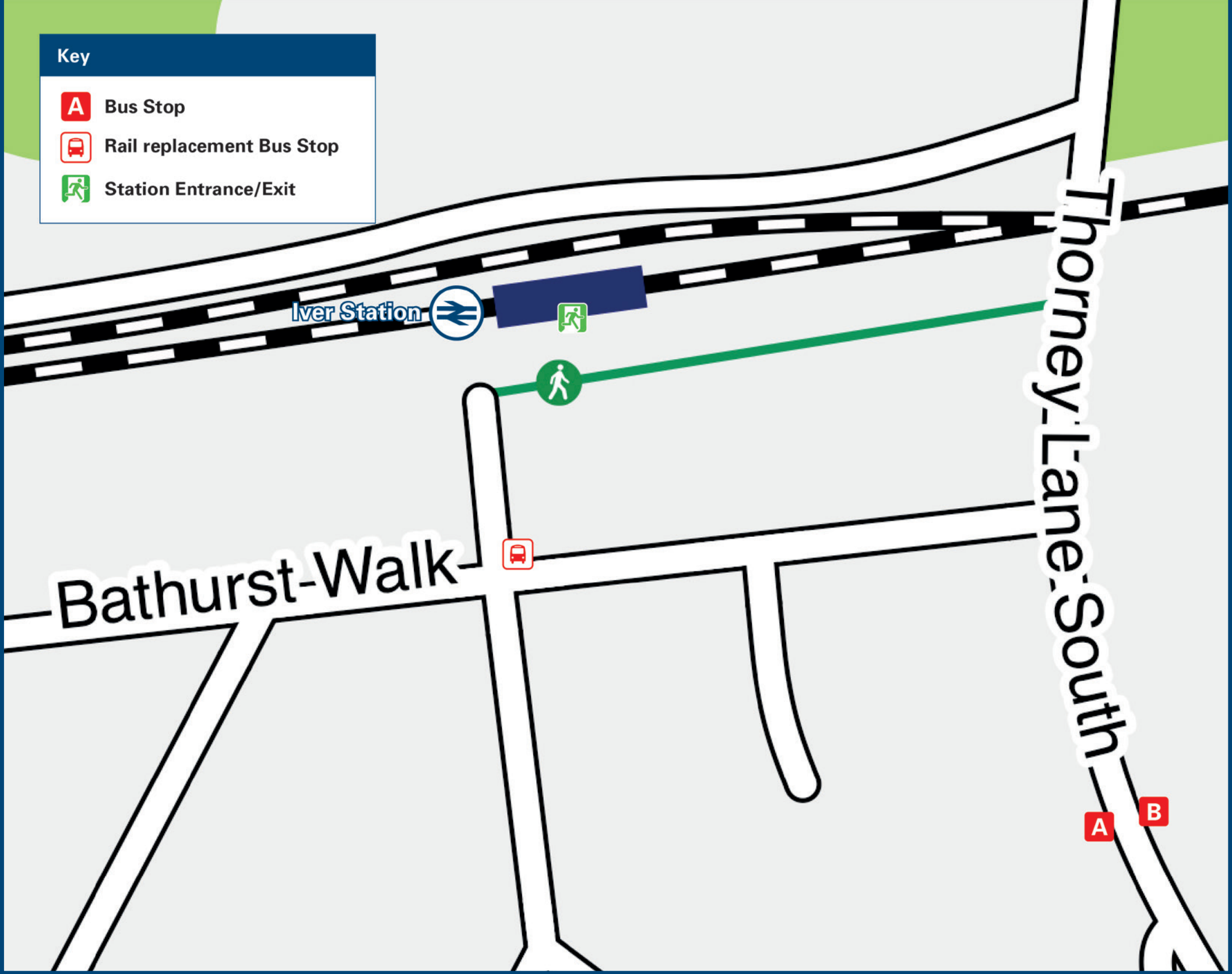
# Iver Station

## Onward Travel Information

### Local area map



### Buses



Rail replacement services from the bus layby, at the front of the station.

### Information

(Data correct at August 2021)

**THERE ARE NO REGULAR BUS SERVICES SERVING IVER RAILWAY STATION.**

**Rail replacement services from the bus layby, at the front of the station.**

**Iver Station has no taxi rank or cab office. Advance booking is essential, please consider using the following local operators: (Inclusion of this number doesn't represent any endorsement of the taxi firm)**

**Sky1ex Cars**  
020 8577 7444

**247 Cars**  
01895 247 247

**Uxbridge Taxis**  
01895 540 014

### Further information about all onward travel

Local Cycle Info	National Cycle Info	Bus Times	NextBuses	PlusBus
<a href="http://www.buckinghamshire.gov.uk">www.buckinghamshire.gov.uk</a> For more information on bus routes and cycling.	<a href="http://sustrans.org.uk">sustrans.org.uk</a> Sustrans is the UK's leading sustainable transport charity.	See timetable displays at bus stops. <a href="http://www.traveline.info">www.traveline.info</a> 0871 200 22 33 <small>calls cost 10p per minute plus your phone company's access charge</small>	<b>Find the bus times for your stop.</b> Search for a bus stop by entering a postcode, street & town or a stop name & town.	<b>plusbus.info</b> A discount price 'bus pass' that you buy with your train ticket. It gives you unlimited bus travel around your chosen town, on participating buses.

### National Rail Enquiries

Online	NRE App	Social Media	Alert Me	Contact Centre	PlusBike
<a href="http://nationalrail.co.uk">nationalrail.co.uk</a>	<b>Free National Rail Enquiries app for iOS and Android</b>	<a href="https://facebook.com/nationalrailenq">facebook.com/nationalrailenq</a> @nationalrailenq	You can sign up to Alert Me messages on the National Rail Enquiries website where you can receive train and platform notifications directly to your smart phone. <a href="http://nationalrail.co.uk/alertme">nationalrail.co.uk/alertme</a>	<b>03457 48 49 50</b> Calls cost no more than calls to geographic numbers (01 or 02) and may be recorded.	<a href="http://nationalrail.co.uk/plusbike">nationalrail.co.uk/plusbike</a> For more information.



**National Rail**  
Britain's train companies working together

